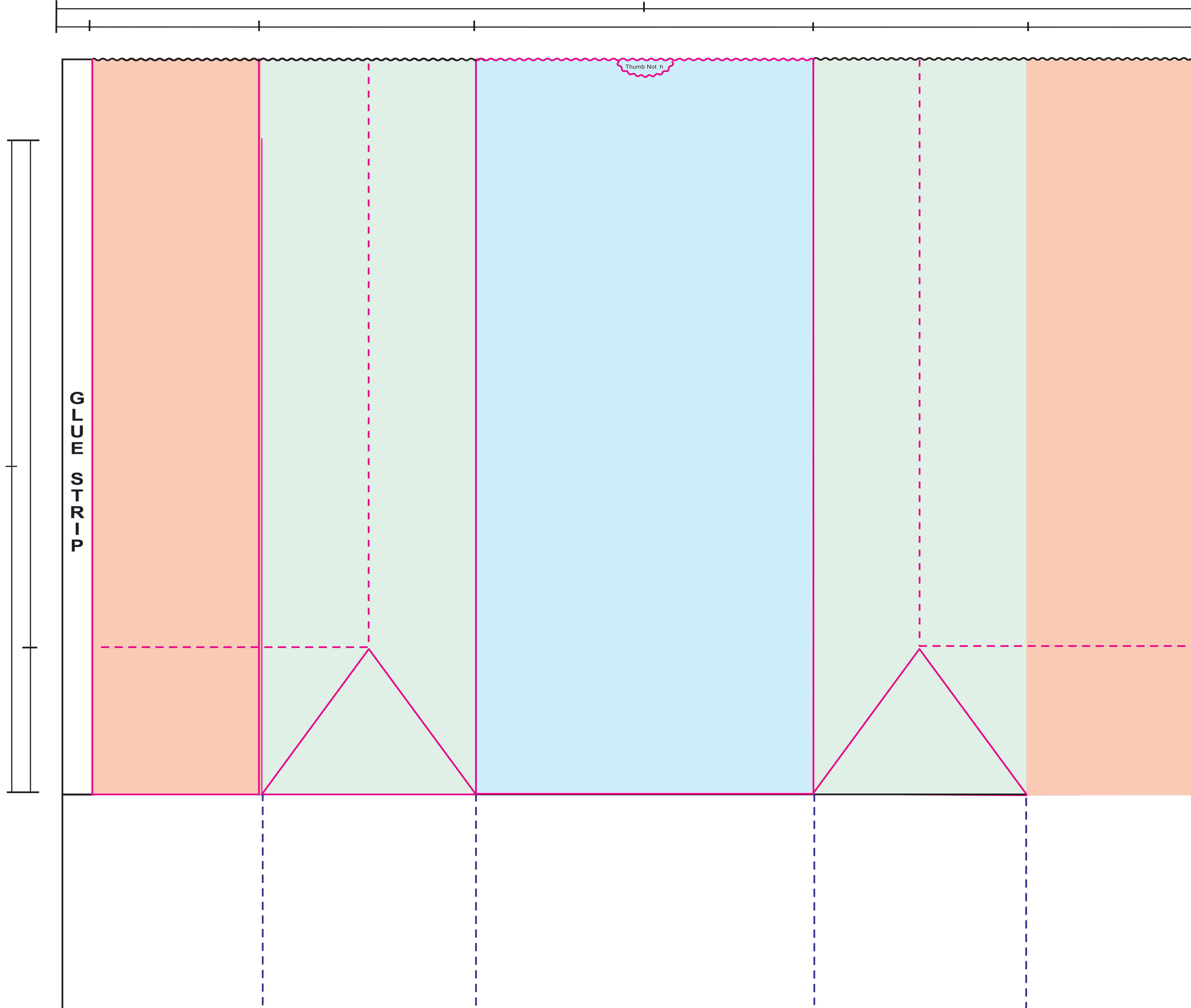


SOS BAG 25# TEMPLATE

Finished Size: 8 1/4" x 5 1/4" x 18"
Square Bottom



Please check this proof carefully. Once approved, no claims or allowances of any kind will be allowed for incorrect copy, size, or position. Proof indicates copy, size and placement only. Back seam placement subject to production capabilities. Copy within 1/4" of bag edges may bleed over edge.

WISCONSIN CONVERTING INC.

CONTROL #: _____ **PRINT NAME:** _____

| | | | | | | |
|--------------------------|-------|--------------|--------------|--------------|----------------|---------------|
| Paper Color/Basis Weight | MG/MF | Ink Color #1 | Ink Color #2 | Ink Color #3 | Art Dimensions | Art Placement |
| | | | | | | |

Customer Approval to Proceed _____ Date _____

Customer Approval with Changes Noted _____ Date _____

Production Notes:

- DIE
- FOLD
- SLIT
- FACE PANEL
- BACK FACE PANEL
- GUSSET PANEL
- INDICATES AREAS NOT VISIBLE ON FINISHED BAG