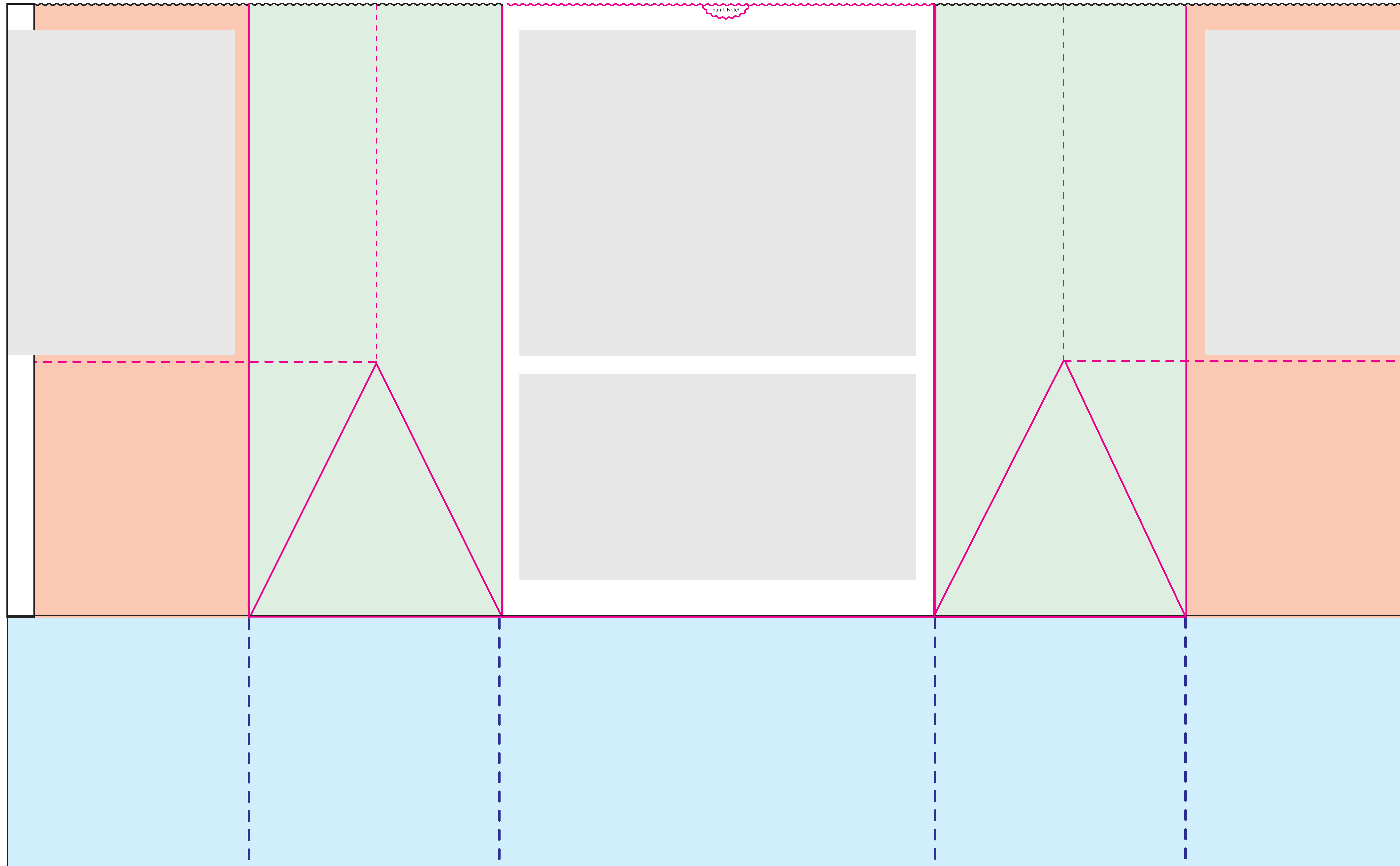


SOS BAG TEMPLATE - 1/6 BARREL








Finished Size: **12" x 7" x 17"**
Square Bottom

PRINT MUST FIT WITHIN SHADED AREA

 PRINT AREA



Production Notes:

-  DIE
-  FOLD
-  SLIT
-  FACE PANEL
-  BACK FACE PANEL
-  GUSSET PANEL
-  INDICATES AREAS NOT VISIBLE ON FINISHED BAG



WISCONSIN CONVERTING INC.

CONTROL #: _____ **PRINT NAME:** _____

Paper Color/Basis Weight _____ MG/MF _____

Ink Color #1 _____

Ink Color #2 _____

Ink Color #3 _____

Art Dimensions _____

Art Placement _____

Please check this proof carefully. Once approved, no claims or allowances of any kind will be allowed for incorrect copy, size, or position. Proof indicates copy, size and placement only. Back seam placement subject to production capabilities. Copy within 1/4" of bag edges may bleed over edge.

Customer Approval to Proceed _____ Date _____

Customer Approval with Changes Noted _____

Date _____