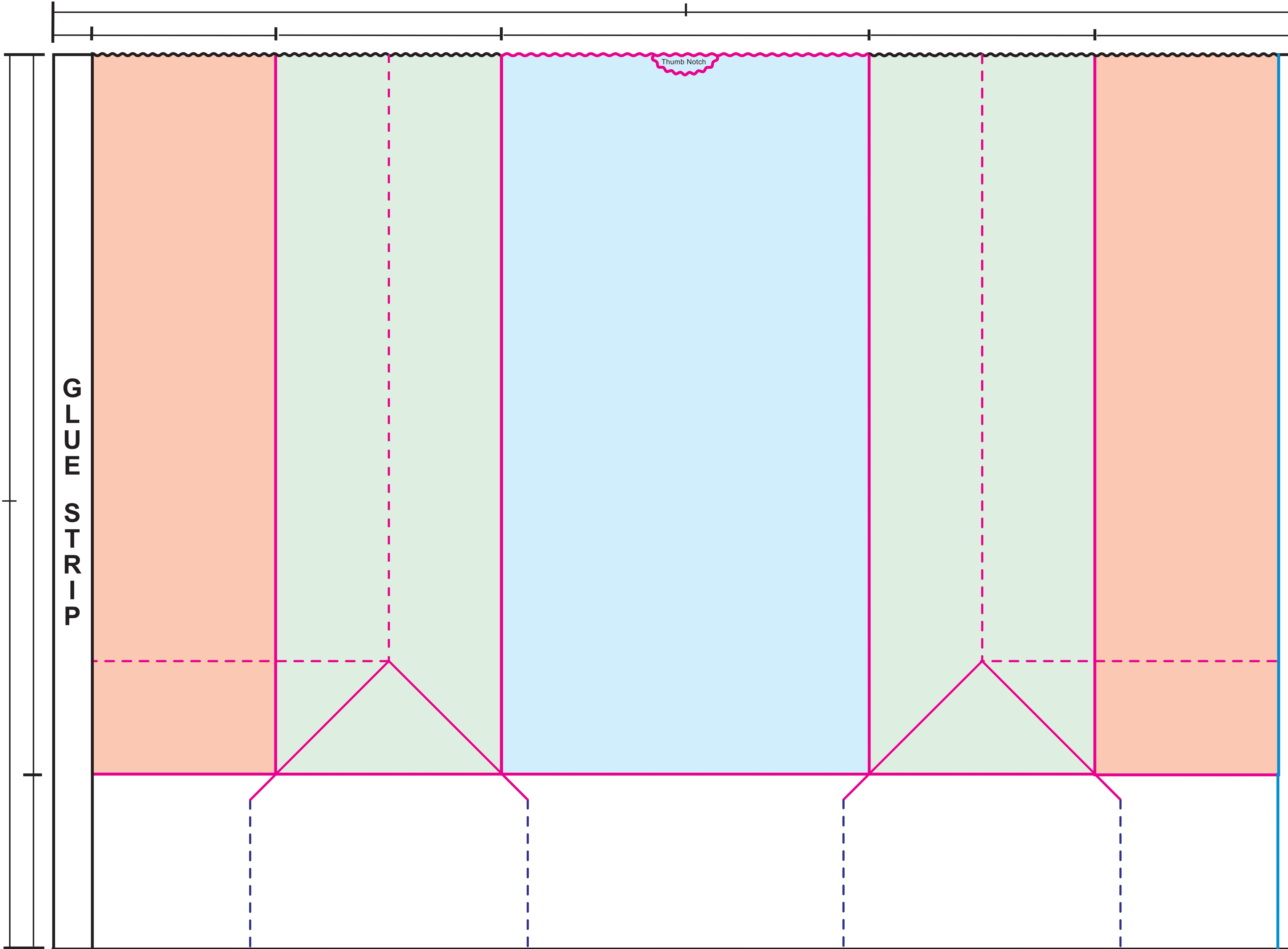


SOS BAG 12# TEMPLATE

Finished Size: 7 1/8" x 4 3/8" x 13 15/16"
Square Bottom




Thumb Notch

STRIP

Production Notes:

Please check this proof carefully. Once approved, no claims or allowances of any kind will be allowed for incorrect copy, size, or position. Proof indicates copy, size and placement only. Back seam placement subject to production capabilities. Copy within 1/4" of bag edges may bleed over edge.



WISCONSIN CONVERTING INC.

DATE:

CONTROL#:	PRINT NAME:	DATE:			
Paper	Color	r/Ba	1 MG/MF	Ink Color #1	Art Placement
				Ink Color #2	Art Dimensions
				Ink Color #3	

Customer Approval to Proceed

Customer Approval with Changes Noted

- DIE
- FOLD
- SLIT
- FACE PANEL
- BACK FACE PANEL
- GUSSET PANEL
- INDICATES AREAS NOT VISIBLE ON FINISHED BAG