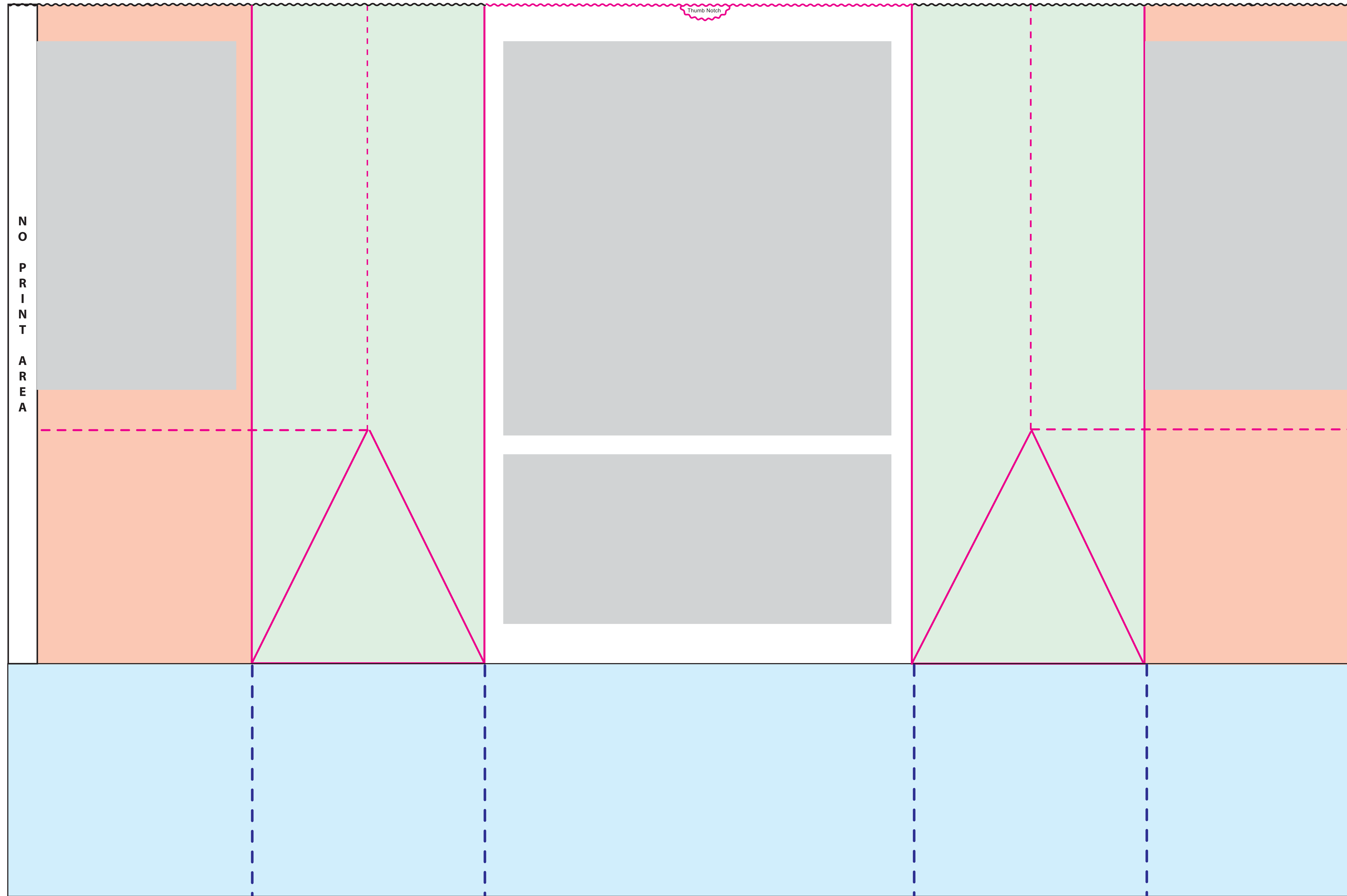


# SOS BAG TEMPLATE - MODIFIED 1/6 BBL








Finished Size: **11" x 6" x 17"**  
Square Bottom

PRINT MUST FIT WITHIN SHADED AREA


 PRINT AREA



**Production Notes:**  
 \_\_\_\_\_  
 \_\_\_\_\_  
 \_\_\_\_\_

-  DIE
-  FOLD
-  SLIT
-  FACE PANEL
-  BACK FACE PANEL
-  GUSSET PANEL
-  INDICATES AREAS NOT VISIBLE ON FINISHED BAG

Please check this proof carefully. Once approved, no claims or allowances of any kind will be allowed for incorrect copy, size, or position. Proof indicates copy, size and placement only. Back seam placement subject to production capabilities. Copy within 1/4" of bag edges may bleed over edge.



WISCONSIN CONVERTING INC.  
**CONTROL #:** \_\_\_\_\_  
 Paper Color/Basis Weight \_\_\_\_\_

**PRINT NAME:** \_\_\_\_\_  
 Ink Color #1 \_\_\_\_\_  
 Ink Color #2 \_\_\_\_\_  
 Ink Color #3 \_\_\_\_\_  
 Art Dimensions \_\_\_\_\_  
 Art Placement \_\_\_\_\_

**DATE:** \_\_\_\_\_  
 \_\_\_\_\_  
 \_\_\_\_\_  
 \_\_\_\_\_  
 \_\_\_\_\_  
 \_\_\_\_\_

Customer Approval to Proceed Date \_\_\_\_\_  
 Customer Approval with Changes Noted Date \_\_\_\_\_