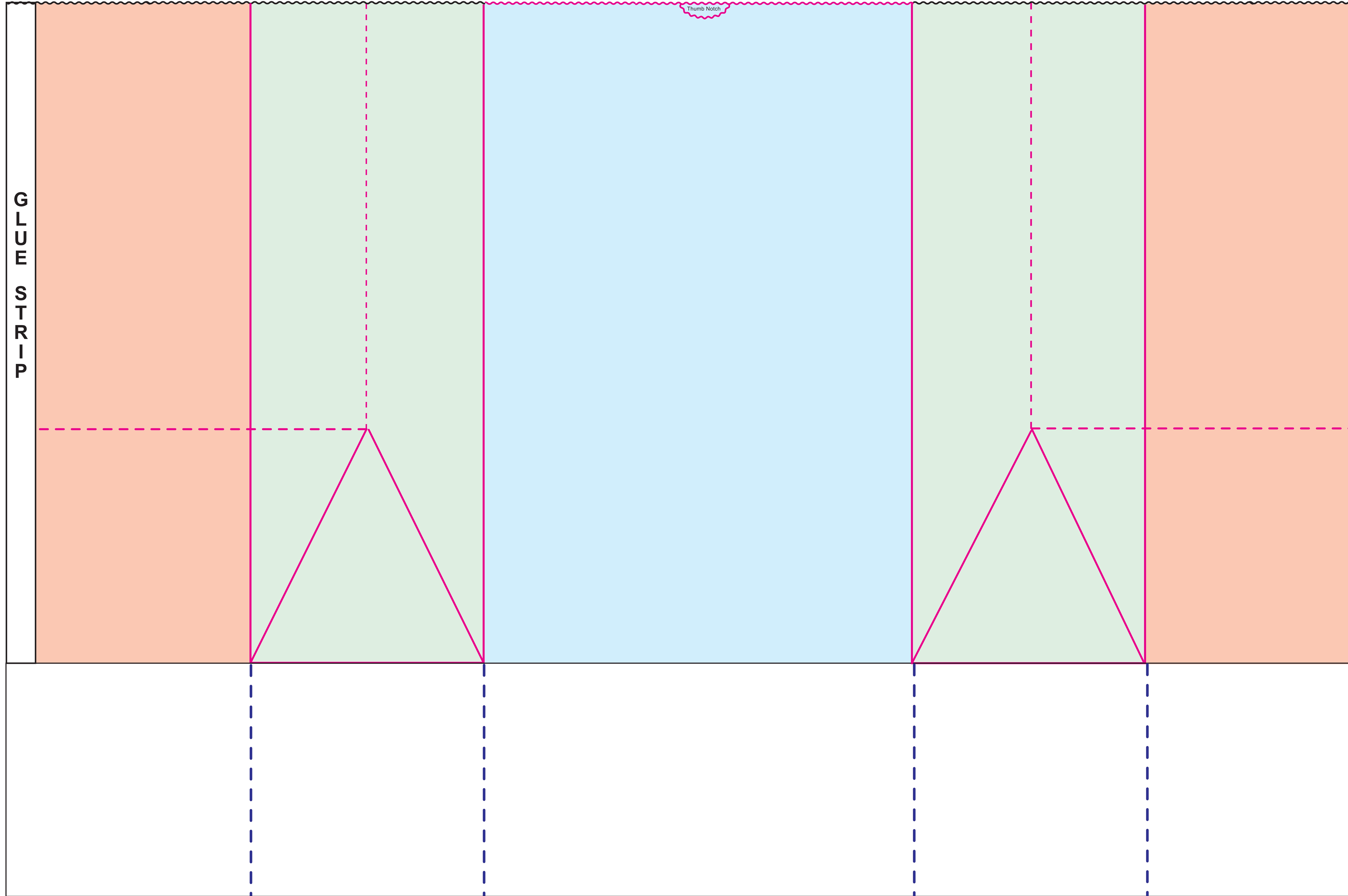


SOS BAG TEMPLATE - WCI 1/6 BARREL

Finished Size: **11" x 6" x 17"**
Square Bottom



Production Notes:

- DIE
- - - FOLD
- SLIT
- FACE PANEL
- BACK FACE PANEL
- GUSSET PANEL
- INDICATES AREAS NOT VISIBLE ON FINISHED BAG

WCI
WISCONSIN CONVERTING INC.

Please check this proof carefully. Once approved, no claims or allowances of any kind will be allowed for incorrect copy, size, or position. Proof indicates copy, size and placement only. Back seam placement subject to production capabilities. Copy within 1/4" of bag edges may bleed over edge.

CONTROL #:		PRINT NAME:		DATE:	
Paper Color/Basis Weight	MG/MF	Ink Color #1	Ink Color #2	Ink Color #3	Art Placement
Customer Approval to Proceed		Date		Customer Approval with Changes Noted	
				Date	